

AVAILABLE
with Signature
Calibration
SEE PG. IN-5

Ultra Precision Universal Canister Load Cells

Model UG

0.03% NON-LINEARITY

100-200,000 lbs.

STAINLESS STEEL



Model UG Ultra Precision Universal load cell achieves scale quality and performance standards. The Model UG achieves $\pm 0.03\%$ non-linearity with very little deflection (typically .0045"). It utilizes a four arm strain gage bridge which is bonded and tested for high precision and dependability. Female threads on both ends facilitate mounting in any position for tension, compression, or universal force measurements. Model UG load cells can be used in both static and dynamic applications. Stainless steel construction ensures high reliability. Typical applications include wind tunnels; rocket engine tests; hopper, tank, or bin weighing; and weighing scales.

Model UG Order Code BL122

PERFORMANCE

Load Ranges	100 to 200,000 lbs.
Non-Linearity (max)	$\pm 0.03\%$ F.S.*
Hysteresis (max)	$\pm 0.03\%$ F.S.
Non-Repeatability (max)	$\pm 0.02\%$ F.S.
Output	3mV/V
Resolution	Infinite
Creep (max)02% (20 min.)

ENVIRONMENTAL

Temperature, Operating	-30° F to 185° F
Temperature, Compensated	60° F to 160° F
Temperature Effect	
- Zero (max)0015% F.S./° F
- Span (max)0008% Rdg./° F

ELECTRICAL

Strain Gage Type	Bonded foil
Excitation (calibration)	10VDC
Bridge Resistance	350 ohms
Wiring Code (std)	#2 (See Pg. AP-8)
Electrical Termination (std)	
100-200,000 lbs	MS3102E-14S-6P
Mating Connector (not incl.)	MS3106A-14S-6S

MECHANICAL

Static Overload Capacity	50% over capacity
Casing Material	Stainless steel
Deflection—Full Scale0045"

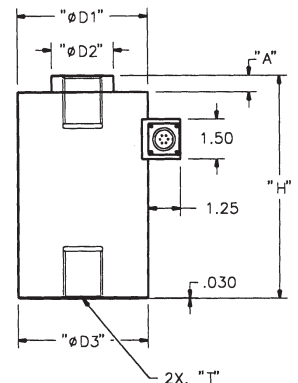
Notes Standard calibration for tension/compression load cells is in tension only.

* 0.05% at ranges ≤ 250 lbs., and $\geq 75,000$ lbs.

Dimensions

Model UG (Order Code BL122)

Available Ranges	H"	D1" Dia.	D2" Dia.	A"	T Typ.
100; 250; 500 lbs.	2.75	2.00	.63	.09	3/8-24 UNF x 7/16
1000; 2000; 3000; 4000 lbs.	4.13	2.50	.75	.09	1/2-20 UNF x 5/8
5000; 7500; 10,000 lbs.	5.88	3.50	1.56	.19	1-14 UN x 1-1/8
15,000; 20,000; 30,000 lbs.	8.50	5.00	2.38	.63	1-1/2-12 UNF x 2
50,000; 75,000 lbs.	12.00	6.00	3.63	.69	2-12 UN x 2-1/2
100,000; 150,000 lbs.	17.00	8.00	6.00	.69	3-8 UN x 4-1/2
200,000 lbs.	21.00	9.00	7.50	.75	4-8 UN x 5-1/2



Options (See Appendix)

Temperature compensated 1b, 1c; Electrical termination 6e, 6f, 6g, 6j; Int. Shunt cal 8a
Special calibration 30a, 30b; Signature calibration 53e

Premium Options: 9a, 9b

Accessories: Mating connectors and connector/cable assemblies; Load buttons