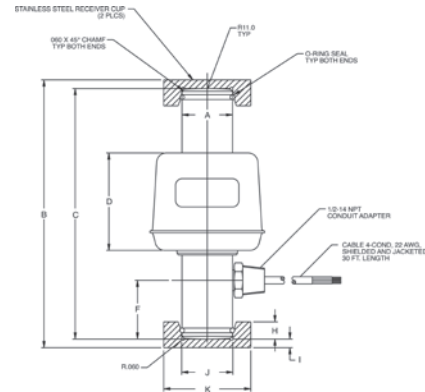


RLSCA-50K

Rocker Column, Stainless Steel Welded-seal, IP67, NTEP Certified 1:10,000 Class IIIL Multiple Cell



Picture is a representation of actual product



Specifications

Full Scale Output:
2 mv/V nominal

Output Resistance:
1,050 (± 10) ohms

Input Resistance:
1,100 ohms

Material/Finish:
Stainless steel

Temperature:
Compensated range
14°F to 104°F/-10°C to 40°C
Operating range
-40°F to 150°F/-40°C to 65°C

Safe Overload:
150% full scale

Rated Excitation:
5-10 VDC (15 V maximum)

Combined Error:
0.025% full scale

Non-repeatability:
0.01% full scale

Insulation Resistance:
1,000 megohms

Seal Type:
Welded seal, IP67

Cable Length:
30 ft (9 m)

Cable Diameter:
0.200 polyurethane jacket

Cable Color Code:

Green+ Excitation
Black- Excitation
White- Signal
Red+ Signal

Warranty:

Two-year limited warranty

Approvals:



Dimensions

RATED CAPACITY	A	B	C	D	F	H	I	J	K
lb/inches									
50,000	1.46	7.75	7.25	2.82	1.70	0.50	0.25	1.48	2.50
kg/mm									
22,679.6	37.0	196.8	184.1	71.6	43.1	12.7	6.35	37.5	63.5

Order Information

LOAD RATING	PART #	EST. SHIPPING WEIGHT	PRICE
50,000 lb* (22,679.6 kg)	68918	7 lb	Consult
Replacement load cup set upper and lower included	85433	1 lb	Consult
Replacement O-rings	92988	1 lb	Consult/each

*Load cell supplied with load cups

Interchangeable Products

MANUFACTURER	MODEL
Cardinal®	SCA-50K