

ISOBAR®

AC Transient Protector



STANDARD FEATURES

- Four outlets
- 6-foot cord with grounded three-prong plug
- Lighted on/off switch
- Circuit breaker protected
- Multiple filter design prevents the different components of your system from interfering with each other
- UL1449 listed at 330 volts
- Exclusive isolated filter banks prevent equipment interaction
- ISOBAR's cascade circuitry allows you to choose more protection for your most sensitive equipment and a lesser degree of protection for equipment with more tolerance

SPECIFICATIONS

CLAMP VOLTAGE:

140V rms

PEAK SURGE CURRENT:

13,000 Amps

CLAMPING TIME:

Less than five nanoseconds

INPUT VOLTAGE:

120VAC

MAXIMUM CURRENT:

15 Amps

MAXIMUM POWER:

1875 Watts

NOISE SUPPRESSION:

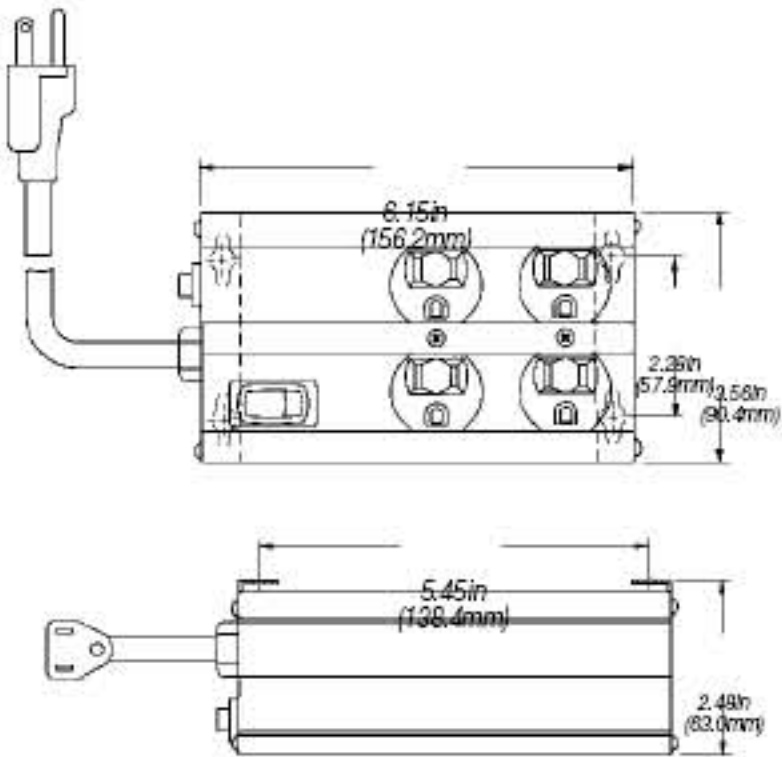
Frequency	Attenuation
50 KHz	>20 db
150 KHz	>40 db
1 MHz	>80 db
>6 MHz	>30 db

DIMENSIONS:

6.15 in W x 3.56 in H x 2.48 in D
(156.2mm W x 90.4mm H x 63.0mm D)

WEIGHT:

Approximately 2 lb (0.91 kg)



© 2009 Rice Lake Weighing Systems 02/09
Prices and specifications subject to change without notice. Visit ricelake.com for current prices.



ISOBAR®

PART #	DESCRIPTION	EST. SHIP WEIGHT
21146.....	ISOBAR® AC four-outlet transient protector	2 lb
36663.....	ISOBAR 230VAC	3 lb