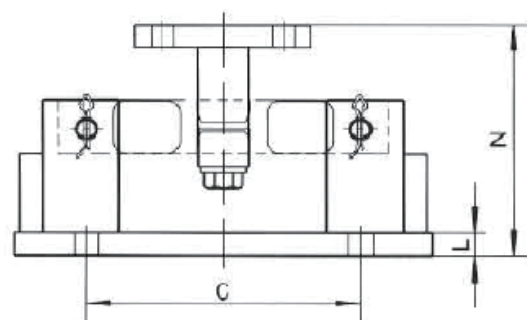
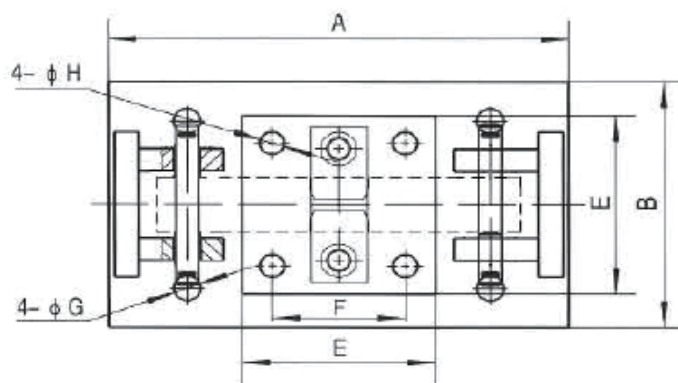
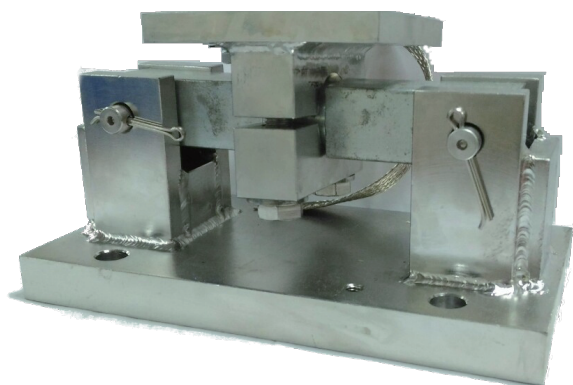


SLM2 Load Cell Mounting Kit For SLD1



STANDARD FEATURES

Integrative assembly can be installed easily.

Mounting kits include dummy cell.

Alloy steel material can withstand environment and gas with slight corrosion.

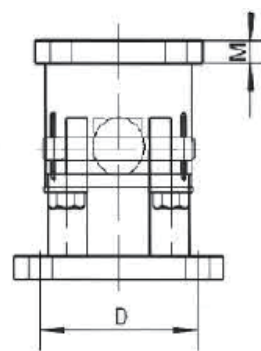
APPLICATIONS

Suitable for testing slight dynamic load under heavy static load.

Excellent anti-side load ability.

Suitable for hopper and tank scales.

Suitable for SLD1,65016,dsr Load cell mounting.



DIMENSIONS

mm

Load cell capacity	A	B	C	D	E	F	G	H	L	M	N
1~5klb	238	127	159	95	102	70	14	14	23	13	130
10~35klb	305	203	191	152	203	152	20	20	19	19	201
50~75klb	413	305	292	241	229	165	21	21	25	25	236

Dimensions and specifications are subject to change without notice.



San Diego, CA USA

<http://www.sensolink.com>

E-mail: sales@sensolink.com