

SLM1 Load Cell Mounting Kit For SLP1

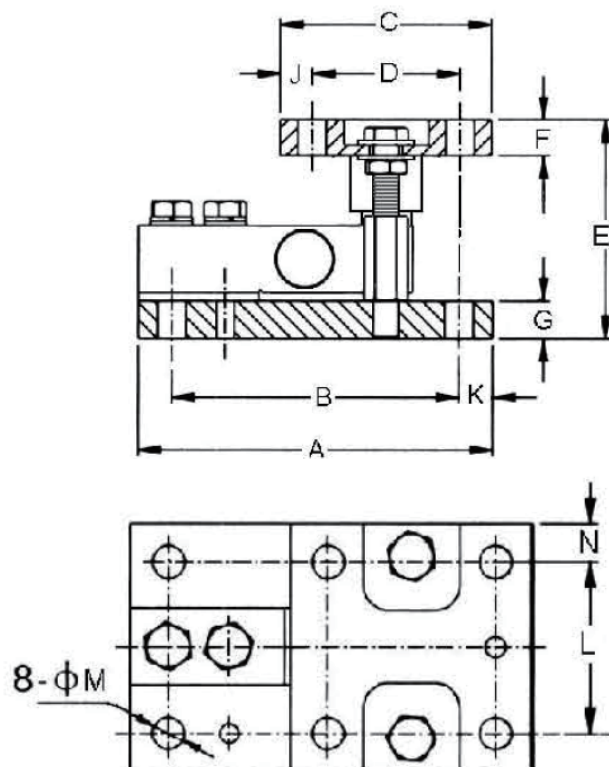


STANDARD FEATURES

Seainless steel or Nickel plated alloy steel versions available.

Mounting kits include ground wire.

Built in Load Cell wire connector protect.

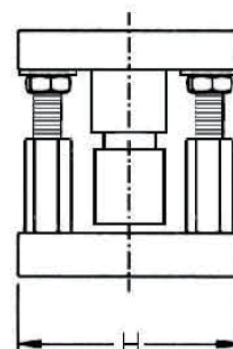


APPLICATIONS

Built in horizontal movement control and lift-off protection.

Provides an ideal solution for process control for hopper and silo scales applications.

Combined with SLP1, SLP2, SQB, Load Cell mounting.



DIMENSIONS

mm

Load cell capacity	A	B	C	D	E	F	G	H	J	K	L	M	N
50~2500kg	175	139	116	80	106	18	18	100	18	17	69	13	15
2500~5000kg	235	199	150	99	132	23	23	160	25	16	89	17	35

Dimensions and specifications are subject to change without notice.



San Diego, CA USA

<http://www.sensolink.com>

E-mail: sales@sensolink.com