

## SI-USB DUAL CHANNEL USB INTERFACE MODULE (U.S. & METRIC)

### FEATURES & BENEFITS

- Easy USB connection to load and torque transducers
- Up to 5000 sample/second
- Graphing and logging software included
- 16-bit resolution
- Data logged into MS Excel compatible CSV file format
- Shunt calibration trigger via software
- Works with mV/V,  $\pm 5$ VDC and 4-20mA output transducers
- 2 Channel

### SPECIFICATIONS

POWER		
AC Adapter Supplied – VDC		24
PERFORMANCE		
Measuring Rate	Internal Sample Rate/sec	5000
	Software Selectable/min – /sec	1 to 2500
Temperature Drift	°C	4 counts/(+10)
	°F	4 counts/(+50)
Nonlinearity – %		0.1
Accuracy – %		0.1
Zero Point – counts		0
ENVIRONMENTAL		
Nominal temperature range	°C	+10 to +40
	°F	+50 to +104
Operating temperature range	°C	0 to +50
	°F	+32 to +122
Storage temperature range	°C	-10 to +70
	°F	+14 to +158

### INPUT

AVAILABLE INPUT RANGES			EXCITATION TO SENSOR	INPUT RESISTANCE	AVAILABLE CONFIGURATIONS
Range	Input	Counts			Dual Channel*
A	$\pm 5$ V	$\pm 25,000$	12V, 200 mA	1.3 M $\Omega$	SI-USB-AA
B	4-20 mA	20,000	12V, 200 mA	62 $\Omega$	SI-USB-BB
C	$\pm 4.5$ mV/V	$\pm 30,000$	5V, 20 mA	200 G $\Omega$	SI-USB-CC
D	$\pm 3$ mV/V	$\pm 30,000$	5V, 20 mA	200 G $\Omega$	SI-USB-DD

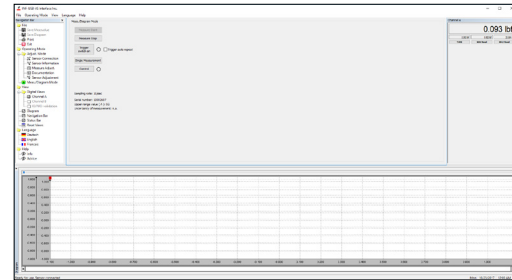
\*Mixed ranges also available. Example: SI-USB-AD.

### STANDARD CONFIGURATION

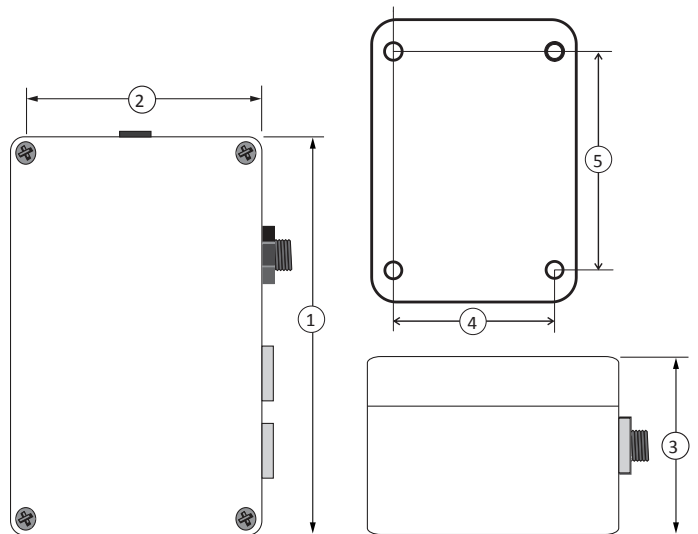


SI-USB (Shown)

### SOFTWARE



- Windows XP, Vista 7, 8 or 10
- System includes USB connection to computer and software
- SI-USB includes two mating connectors



### DIMENSIONS

1		2		3		4		5	
mm	in	mm	in	mm	in	mm	in	mm	in
124.46	4.90	78.74	3.100	55.88	2.200	52	2.05	113	4.45