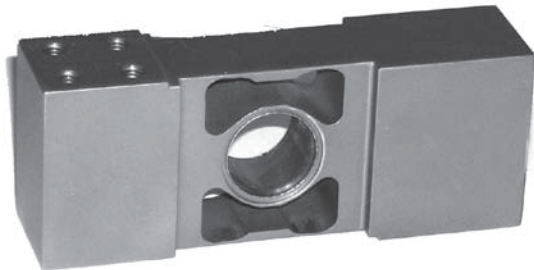
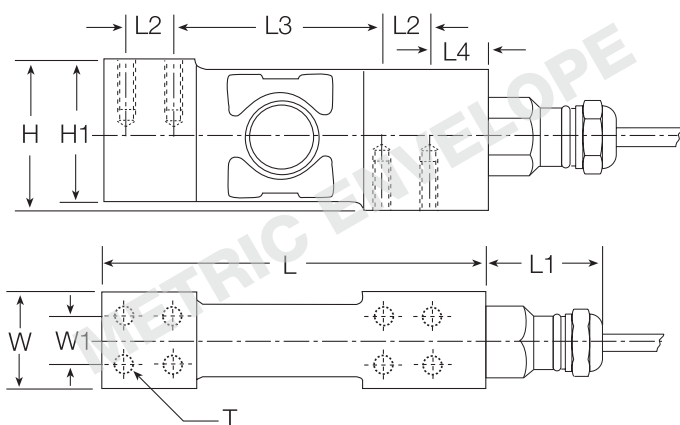


# RLPC6 Single Point, Stainless Steel

NTEP 1:5000 Class III Single Cell, Hermetically Sealed, IP69K





Picture is a representation of actual product



## SPECIFICATIONS:

<b>Full Scale Output:</b>	2.0 mv/v
<b>Bridge Resistance:</b>	1000 Ohms, nominal
<b>Material/Finish:</b>	Stainless steel
<b>Temperature:</b>	Compensated range 14° F to 104° F / -10° C to 40° C
<b>Safe Overload:</b>	200% FS
<b>Safe Sideload:</b>	100% Full scale
<b>Rated Excitation:</b>	10 V DC
<b>Total Error:</b>	0.02% FS
<b>Insulation Resistance:</b>	5000 megohms
<b>Seal Type:</b>	Hermetically sealed, IP69K
<b>Cable Length:</b>	10'/3.1 m
<b>Cable Diameter:</b>	.196 Polyurethane Jacket
<b>Cable Color Code:</b>	Green ..... + Excitation Black ..... - Excitation White ..... + Signal Red ..... - Signal Yellow ..... Shield

<b>Max Deflection</b>	.006 - .010
<b>Max Platform Size:</b>	24' x 24'
<b>Warranty:</b>	Two-year limited warranty
<b>Approvals:</b>	 

## DIMENSIONS

Rated Capacity	H	H1	L	L1	L2	L3	L4	W	W1	T
<b>kg/mm</b>										
20-200	48.0	45.5	123.0	41.0	15.2	67.6	17.8	30.1	15.2	8 X M6/15DP
<b>lb/inches</b>										
66.1-441.0	1.89	1.80	4.84	1.61	.60	2.66	.70	1.18	.60	8 X M6/15DP

## RLPC6 Order Information

Load Rating	Part #	Price
10 kg (22.1 lb)	87027	Consult
20 kg (44.1 lb)	87028	Consult
50 kg (110.2 lb)	87029	Consult
100 kg (220.5 lb)	87030	Consult
200 kg (441.0 lb)	87031	Consult

## Interchangeable Products

Manufacturer	Model	Page #
Flintec	PC6	198