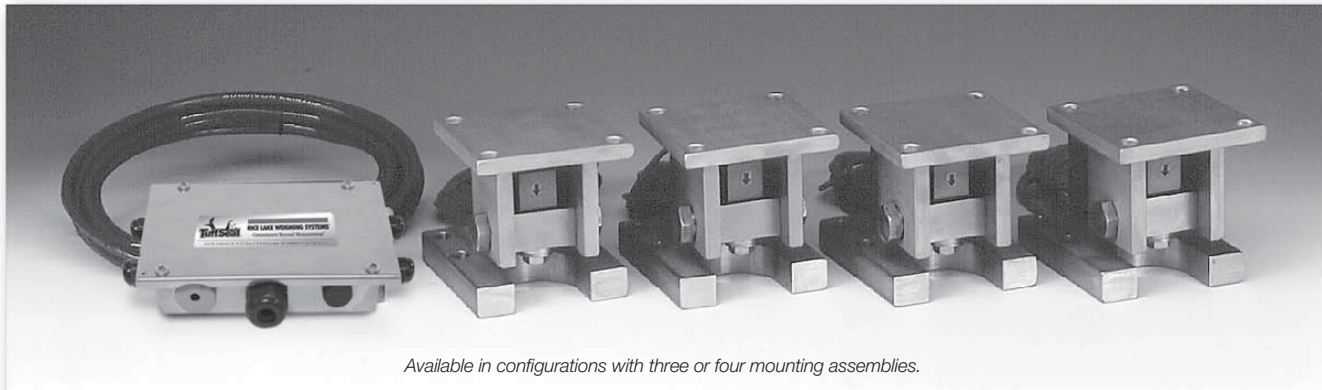


RL1800 Series

Mild Steel/Stainless Steel Weigh Modules

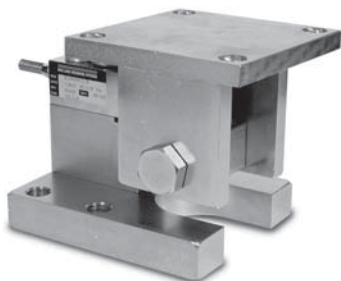


Available in configurations with three or four mounting assemblies.

Picture is a representation of actual product

The RL1800 Series Mounting Assembly Kit utilizes several Rice Lake Weighing Systems components to provide an unmatched level of performance in tank and hopper weighing applications. The RL1800 Series kit is ideally suited for indoor and outdoor process control operations with medium-range capacities. Each module combines multi-directional movement and self-checking capabilities. The RL35023 and RL35023S load cells used are NTEP certified in capacities of 1000 lb to 10,000 lb.

Module with RL35023 single-ended beam load cell. Refer to pages 114-115 for load cell specifications.



COMPLETE KIT INCLUDES:

- 1 JB4SS NEMA 4X stainless steel signal trim junction box
- 3 or 4 RL1800 mild or stainless steel compression mounts
- 3 or 4 RL35023 single-ended beam load cells, RL35023S used in stainless kits (see pages 114-115)
- 25' of our Hostile Environment EL147HE SURVIVOR® load cell cable

APPLICATIONS:

- Conveyors
- Medium-capacity tanks and hoppers

STANDARD FEATURES:

- Capacities (per module): 250-10,000 lb (113.4-4535.9 kg)
- NTEP-certified cells in 1000-10,000 lb (453.6-4535.9 kg) capacities (except 3000 lb [1360.9 kg])
- Zinc plated mild steel/stainless steel construction
- Center-pivoted, tension loading design
- Self-checking, multi-directional movement
- Load is suspended on high-strength bolt instead of wire rope
- Design incorporates spherical washers for self centering
- Stainless steel kit includes RL35023S NTEP-certified load cell

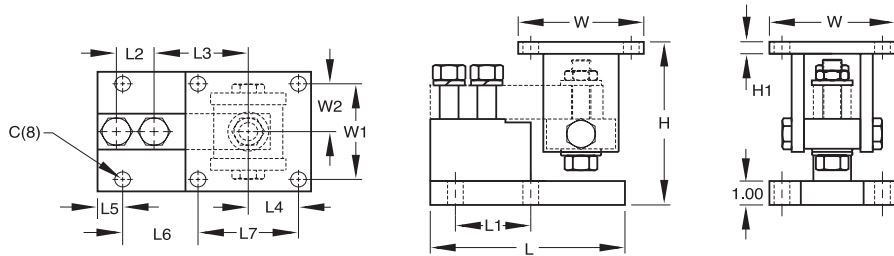
LOAD CELL CERTIFICATIONS:



WEIGH MODULES TANK AND HOPPER KITS

DIMENSIONS

Rated Capacity	C	H Min/Max	H1	L	L1	L2	L3	L4	L5	L6	L7	W	W1	W2
Mild Steel Construction														
lb/inches														
250-5000 SE	.62	5.25/5.56	.50	6.00	2.00	1.00	3.00	2.00	.68	1.94	4.00	5.00	4.00	2.00
5000 LE-10,000	.62	6.12/6.62	.50	7.75	3.00	1.50	3.75	2.00	1.03	2.97	4.00	5.00	4.00	2.00
kg/mm														
113.4-2268.0	15.8	133.4/141.2	12.7	152.4	50.8	25.4	76.2	50.8	17.3	49.3	101.6	127.0	101.6	50.8
2268.0-4535.9	15.8	155.4/168.1	12.7	196.9	76.2	38.1	95.3	50.8	26.2	75.4	101.6	127.0	101.6	50.8
Stainless Steel Construction														
lb/inches														
1000-4000	.62	5.25/5.56	.50	6.00	2.00	1.00	3.00	2.00	.68	1.94	4.00	5.00	4.00	2.00
5000-10,000	.62	6.12/6.62	.50	7.75	3.00	1.50	3.75	2.00	1.03	2.97	4.00	5.00	4.00	2.00
kg/mm														
453.6-1814.4	15.8	133.4/141.2	12.7	152.4	50.8	25.4	76.2	50.8	17.3	49.3	101.6	127.0	101.6	50.8
2268.0-4535.9	15.8	155.4/168.1	12.7	196.9	76.2	38.1	95.3	50.8	26.2	75.4	101.6	127.0	101.6	50.8



RL1800 Mild Steel Order Information

*Load Rating (Load Cell Capacity)	Part #	Price
Single Module (Does NOT Include Load Cell)		
250-5000 lb SE (113.4-2268.0 kg)	17817	Consult
5000 LE-10,000 lb (2268.0-4535.9 kg)	17819	Consult
3-Module Kit		
**250 lb (113.4 kg)	18075	Consult
**500 lb (226.8 kg)	18076	Consult
1000 lb (453.6 kg)	18077	Consult
2000 lb (907.2 kg)	18078	Consult
2500 lb (1134.0 kg)	18079	Consult
3000 lb (1360.8 kg)	18080	Consult
4000 lb (1814.4 kg)	18081	Consult
5000 lb SE (2268.0 kg)	18082	Consult
5000 lb LE (2268.0 kg)	18083	Consult
10,000 lb (4535.9 kg)	18084	Consult
4-Module Kit		
**250 lb (113.4 kg)	18085	Consult
**500 lb (226.8 kg)	18086	Consult
1000 lb (453.6 kg)	18087	Consult
2000 lb (907.2 kg)	18088	Consult
2500 lb (1134.0 kg)	18089	Consult
3000 lb (1360.8 kg)	18090	Consult
4000 lb (1814.4 kg)	18091	Consult
5000 lb SE (2268.0 kg)	18092	Consult
5000 lb LE (2268.0 kg)	18093	Consult
10,000 lb (4535.9 kg)	18094	Consult

SE refers to small envelope

LE refers to large envelope

RL1800 Stainless Steel Order Information

*Load Rating (Load Cell Capacity)	Part #	Price
Single Module (Does NOT Include Load Cell)		
250-4000 lb (113.4-1814.4 kg)	17818	Consult
5000-10,000 lb (2268.0-4535.9 kg)	17820	Consult
3-Module Kit		
1000 lb (453.6 kg)	18095	Consult
2000 lb (907.2 kg)	18096	Consult
2500 lb (1134.0 kg)	18097	Consult
4000 lb (1814.4 kg)	18099	Consult
LE 5000 lb (2268.0 kg)	18100	Consult
10,000 lb (4535.9 kg)	18101	Consult
4-Module Kit		
1000 lb (453.6 kg)	18102	Consult
2000 lb (907.2 kg)	18103	Consult
2500 lb (1134.0 kg)	18104	Consult
4000 lb (1814.4 kg)	18106	Consult
LE 5000 lb (2268.0 kg)	18107	Consult
10,000 lb (4535.9 kg)	18108	Consult
Dummy Cell		
1-5K SE	22980	Consult

* Load Rating is per module

** Use RL30000 load cells