

Available in configurations with three or four mounting assemblies.

Picture is a representation of actual product

The RL1600 Series Mounting Module Kit utilizes several Rice Lake Weighing Systems components to provide an unmatched level of performance in tank and hopper weighing applications. The RL1600 Series kit is ideally suited for indoor and outdoor process control operations in the medium- to high-capacity ranges. Each module incorporates self-checking capabilities for thermal expansion and contraction.

LOAD CELL CERTIFICATIONS:



Cast iron module with RL75016 double-ended beam load cell. Refer to page 135 for load cell specifications.



COMPLETE KIT INCLUDES:

- 1 JB4SS NEMA 4X stainless steel signal trim junction box
- 3 or 4 RL1600 cast iron compression mounts
- 3 or 4 RL75016 double-ended shear beam load cells (see page 135)
- 25' of our Hostile Environment EL147HE SURVIVOR® load cell cable

APPLICATIONS:

- Medium- to heavy-capacity tanks, bins, and hoppers
- Bulk material management
- Dry ingredient batching, mixing, and blending

OPTIONAL FEATURES:

- Kits available with Vishay Sensortronics 65016 load cells, capacities (per module): 1000-25,000 lb (453.6-11,339.8 kg)

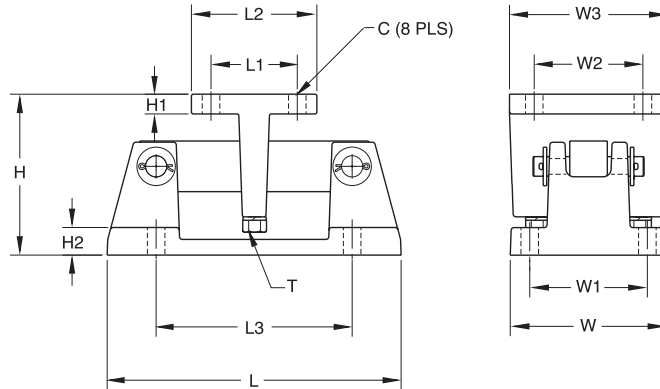
STANDARD FEATURES:

- Capacities (per module): 1000-25,000 lb (453.6-11,339.8 kg)
- Cast iron construction
- Self-checking easy-to-use design allows module to be bolted directly to tank leg without requiring additional mounting plates or load buttons
- Environmentally protected load cells
- Double-ended beam design, center loaded

Cast Iron RL1600 Series Specifications

DIMENSIONS

Rated Capacity	C	H	H1	H2	L	L1	L2	L3	T	W	W1	W2	W3
lb/inches													
1000-5000	.56	5.00	.50	.50	9.31	2.75	4.00	6.25	1/2-13 UNC	5.00	3.75	2.75	4.00
10,000-25,000	.78	7.89	.75	.75	12.00	6.00	8.00	7.50	3/4-10 UNC	8.00	6.00	6.00	8.00
kg/mm													
453.6-2268.0	14.2	127.0	12.7	12.7	236.5	69.9	101.6	158.8	1/2-13 UNC	127.0	95.3	69.9	101.6
4535.9-11,339.8	19.8	200.4	19.1	19.1	304.8	152.4	203.2	190.5	3/4-10 UNC	203.2	152.4	152.4	203.2



RL1600 Order Information

Load Rating (Per Module)	Part #	Price
Single Module (Does NOT Include Load Cell)		
1000-5000 lb (453.6-2268.0 kg)	17964	Consult
10,000-25,000 lb (4535.9-11,339.8 kg)	17965	Consult
3-Module Kit		
1000 lb (453.6 kg)	25663	Consult
1500 lb (680.4 kg)	25664	Consult
2000 lb (907.2 kg)	25665	Consult
2500 lb (1134.0 kg)	25666	Consult
3000 lb (1360.8 kg)	25667	Consult
5000 lb (2268.0 kg)	25668	Consult
10,000 lb (4535.9 kg)	25669	Consult
15,000 lb (6803.9 kg)	25671	Consult
20,000 lb (9071.9 kg)	25672	Consult
25,000 lb (11,339.8 kg)	25674	Consult
4-Module Kit		
1000 lb (453.6 kg)	25675	Consult
1500 lb (680.4 kg)	25676	Consult
2000 lb (907.2 kg)	25677	Consult
2500 lb (1134.0 kg)	25678	Consult
3000 lb (1360.8 kg)	25679	Consult
5000 lb (2268.0 kg)	25680	Consult
10,000 lb (4535.9 kg)	25681	Consult
15,000 lb (6803.9 kg)	25682	Consult
20,000 lb (9071.9 kg)	25683	Consult
25,000 lb (11,339.8 kg)	25684	Consult

Vishay Sensortronics 65016 Order Information

Load Rating (Per Module)	Part #	Price
3-Module Kit		
1000 lb (453.6 kg)	25685	Consult
1500 lb (680.4 kg)	25686	Consult
2500 lb (1134.0 kg)	25688	Consult
5000 lb (2268.0 kg)	25690	Consult
10,000 lb (4535.9 kg)	25691	Consult
15,000 lb (6803.9 kg)	25692	Consult
20,000 lb (9071.9 kg)	25693	Consult
25,000 lb (11,339.8 kg)	25694	Consult
4-Module Kit		
1000 lb (453.6 kg)	25695	Consult
1500 lb (680.4 kg)	25696	Consult
2500 lb (1134.0 kg)	25698	Consult
5000 lb (2268.0 kg)	25700	Consult
10,000 lb (4535.9 kg)	25701	Consult
15,000 lb (6803.9 kg)	25702	Consult
20,000 lb (9071.9 kg)	25703	Consult
25,000 lb (11,339.8 kg)	25704	Consult
Dummy Load Cells		
1000-5000 lb (453.6-2268.0 kg)	18236	Consult
10,000-25,000 lb (4535.9-11,339.8 kg)	18237	Consult
Equalizer Pads		
1000 lb - 5000 lb	Consult Factory	
10,000 lb - 25,000 lb	Consult Factory	