

# Load Cells/Weigh Modules

## RL1380 Single-Point

Stainless Steel



### STANDARD FEATURES

- Platform scales, packaging and process weighing equipment
- Full scale output: 2.0mV/V
- Bridge resistance: 350 ohms, nominal
- Stainless steel
- Environmentally sealed, IP67

### APPROVALS



### SPECIFICATIONS

**FULL SCALE OUTPUT:**  
2.0mV/V

**BRIDGE RESISTANCE:**  
350 ohms

**MATERIAL/FINISH:**  
Stainless steel

**TEMPERATURE:**  
Compensated range  
14°F to 104°F (-10°C to 40°C)

**SAFE OVERLOAD:**  
150% Full scale

**RATED EXCITATION:**  
10VAC/DC (15V maximum)

**COMBINED ERROR:**  
0.03% Full scale

**INSULATION RESISTANCE:**  
1000 megohms

**SEAL TYPE:**  
Environmentally sealed, IP67

**CABLE LENGTH:**  
10ft (3.1 m)

### CABLE COLOR CODE:

Green + Excitation  
Black - Excitation  
White + Signal  
Red - Signal  
Yellow Shield

**PLATFORM SIZE:**  
15.75in x 15.75in

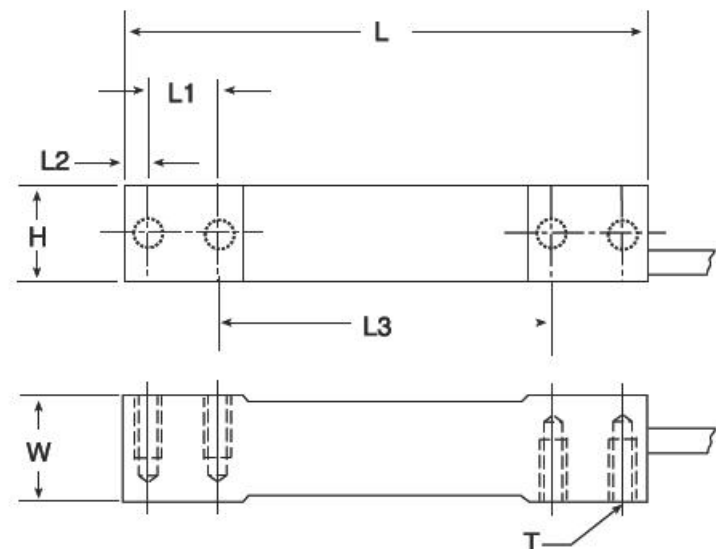
**WARRANTY:**  
Two-year limited warranty

### DIMENSIONS

RATED CAPACITY kg/mm	H	L	L1	L2	L3	T	W
7-15	19.1	139.7	19.1	6.4	88.9	1/4-20 UNC X 19.1 DP	30.2
30-60	23.9	139.7	19.1	6.4	88.9	1/4-20 UNC X 19.1 DP	30.2
<b>lb/inches</b>							
15.4-33.1	.75	5.50	.75	.25	3.50	1/4-20 UNC X .75 DP	1.19
66.1-132.3	.94	5.50	.75	.25	3.50	1/4-20 UNC X .75 DP	1.19

### LOAD RATING

	PART #
7 kg (15.4lb) .....	30783...
10 kg (22.0lb) .....	30782...
15 kg (33.1lb) .....	30781...
30 kg (66.1lb) .....	30780...
60 kg (132.3lb) .....	30779...



Load Cells