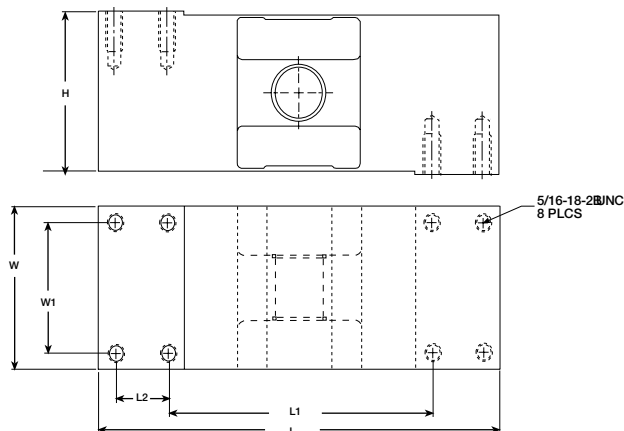






Picture is a representation of actual product



SPECIFICATIONS:

Full Scale Output:	2.0 mV/V
Bridge Resistance:	1000 ohms, nominal
Material/Finish:	Stainless steel
Temperature:	Compensated range 14°F to 104°F/-10°C to 40°C
Safe Overload:	200% Full scale
Safe Sideload:	100% Full scale
Rated Excitation:	10V DC (20V maximum)
Total Error:	0.02% Full scale
Insulation Resistance:	5000 megohms
Deflection at Capacity:	50-1000 kg ≤ .4 mm/.015"
Seal Type:	Hermetically sealed, IP69K
Cable Length:	10'/3.1 m
Cable Diameter:	.196 polyurethane jacket
Cable Color Code:	Green + Excitation Black - Excitation White + Signal Red - Signal Yellow - Shield
Max Platform Size:	39" x 39"
Warranty:	One-year limited warranty
Approvals:	 

DIMENSIONS

Rated Capacity	L	L1	L2	W	W1	H
kg/mm						
50-1000	190.5	124.8	24.9	74.9	59.9	74.9
lb/inches						
110.3-2205	7.50	4.92	.98	2.95	2.36	2.95

PCB Order Information

Load Rating	Part#	Price
NTEP 1:5000		
50 kg (110.3 lb)	45274	Consult
100 kg (220.5 lb)	45275	Consult
250 kg (551.3 lb)	45276	Consult
500 kg (1,102.5 lb)	45277	Consult
1000 kg (2,205 lb)	45278	Consult
Conduit Adapter, 1/2-14 NPT	17703	Consult

Interchangeable Products

Manufacturer	Model	Page #
Rice Lake Weighing Systems	RL1250*	179
Vishay Celtron	LOC*	213
Vishay Tedeá-Huntleigh	1250*	354

* Environmentally sealed