

▶ CI94M

▶ TANK MOUNT

Coti, Inc. • 122 Export Circle • Huntsville, Alabama 35806 • Toll Free: 1-888-268-4462 • Fax: 256-859-5024 • www.cotiinc.com



Coti, Inc. - Model CI94M Mounting Assembly with Load Cell

Tank weighing assembly is designed for use with tanks, bins, reactors and large capacity storage silos. Features include easy installation and self checking capability.

Mild Steel Load Cell with Mild Steel Mount

ORDER INFORMATION		DISCOUNT C	SUGGESTED
Part #	Capacity		List Price
CI94M-50K-MS	50K		\$1615.00
CI94M-100K-MS	100K		\$2695.00
CI94M-200K-MS	200K		\$4165.00
CI94M-300K-MS	300K		\$4800.00
CI94M-500K-MS	500K		\$6175.00

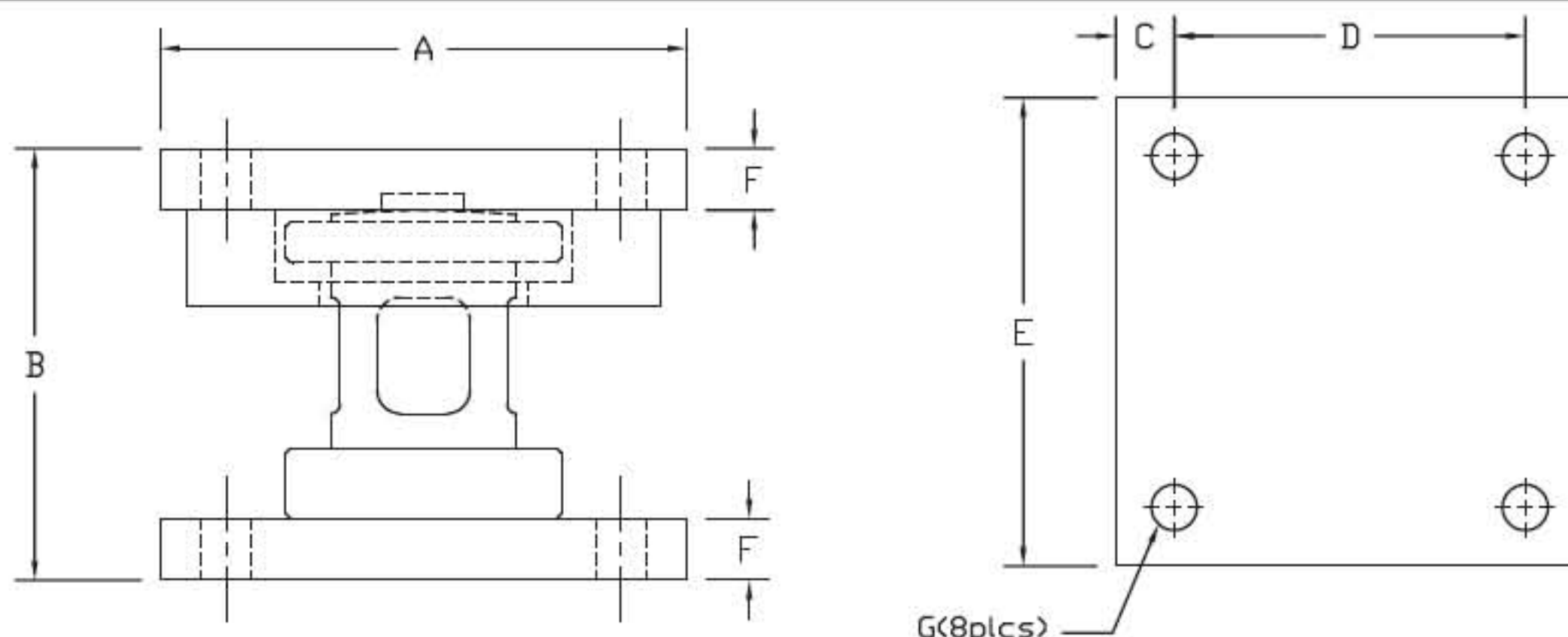
Stainless Steel Load Cell with Mild Steel Mount

ORDER INFORMATION		DISCOUNT C	SUGGESTED
Part #	Capacity		List Price
CI94M-50K-SM	50K		\$1912.00
CI94M-100K-SM	100K		\$3058.00
CI94M-200K-SM	200K		\$4765.60
CI94M-300K-SM	300K		\$5443.50
CI94M-500K-SM	500K		\$7137.50

Stainless Steel Load Cell with Stainless Steel Mount

ORDER INFORMATION		DISCOUNT C	SUGGESTED
Part #	Capacity		List Price
CI94M-50K-SS	50K		\$2271.00
CI94M-100K-SS	100K		\$3643.00
CI94M-200K-SS	200K		\$5679.80
CI94M-300K-SS	300K		\$6490.50
CI94M-500K-SS	500K		\$8497.50

Main Dimensions and Accessories



RATED CAPACITY	DIMENSIONS										
					A	B	C	D	E	F	G
50K					8.00	5.13	1.00	6.00	8.00	0.94	0.78
100K					10.00	7.38	1.25	7.50	10.00	1.19	1.12
200K					12.00	9.50	1.75	8.50	12.00	1.44	1.63
300K					14.00	11.00	2.25	9.50	14.00	1.94	1.63
500K					17.00	12.62	2.50	12.00	17.00	2.44	2.13