

BSC4 4-CHANNEL BRIDGE AMPLIFIER (U.S. & METRIC)

FEATURES & BENEFITS

- $\pm 10V$ and 4-20mA or USB outputs
- 4 independent channels
- For use with model 3AXX series 3-axis load cells
- Can be used with up to any 4 standard load cells (with mV/V output)

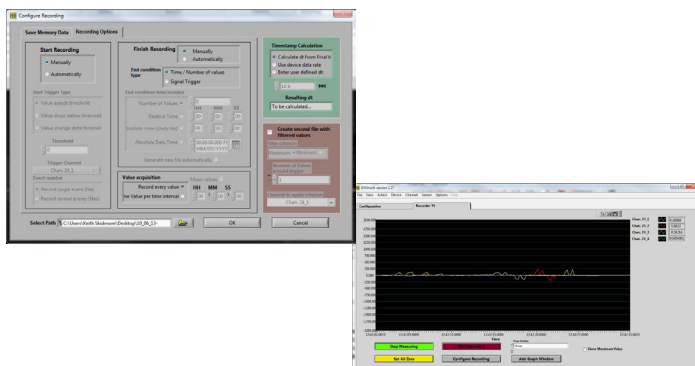
SPECIFICATIONS

PERFORMANCE		BSC4A	BSC4D
Signal input range – mV/V		up to 10	up to 10
Accuracy class – %		0.05	0.05
CMR – dB @ 60 Hz		95 - 110	95 - 110
Data rate – Hz		N/A	0 - 900
Sampling frequency – MHz		N/A	1.92
Cut-off frequency – Analog – Hz		250	1000
Cut-off frequency – Digital		N/A	Notch Filter
Resolution – bit		Analog	16
EXCITATION			
Excitation voltage – V		5	2.5
Excitation current – mA		10	10
Supply voltage – VDC		11 to 30	4.5 - 5.5 from USB
Supply current – mA		< 1000	< 200
ENVIRONMENTAL			
Operating range	°C	-10 to +65	-10 to +65
	°F	+14 to +149	+14 to +149
Storage range	°C	-40 to +85	-40 to +85
	°F	-40 to +185	-40 to +185
Zero drift/ °C		0.005%	0.005%
Sensitivity drift/ °C		0.001%	0.001%

OPTIONS

- M12 load cell connectors (4x)

SOFTWARE SCREEN SHOTS



STANDARD CONFIGURATION

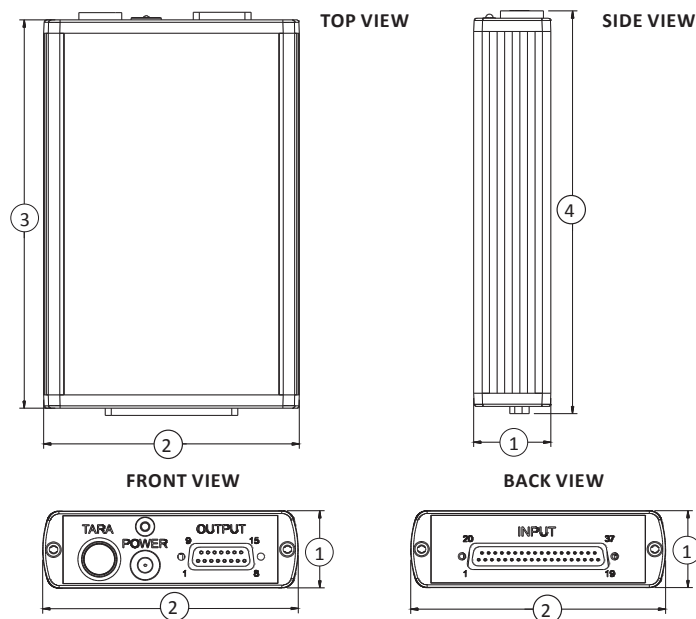


BSC4A (Shown)



BSC4D (Shown)

MODEL	DESCRIPTION
BSC4A	$\pm 10V$ and 4-20mA output, up to 10 mV/V input, 37-pin input connector. Includes power supply
BSC4D	USB output, up to 10 mV/V input, 37-pin input connector, USB powered. Includes graphing and logging software



DIMENSIONS

	1		2		3		4	
	mm	in	mm	in	mm	in	mm	in
	32.0	1.25	106.0	4.17	161.0	6.33	169.0	6.65