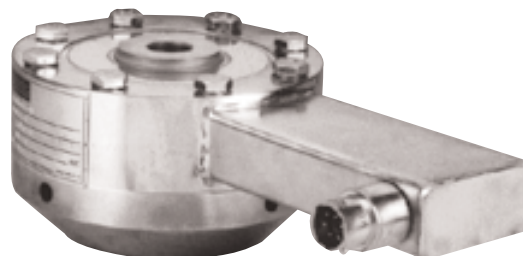


High Output Ultra Precision & Fatigue Rated Load Cells

Models 45a, 47a

ZERO & SPAN ADJUSTMENTS

TENSION & COMPRESSION



Model 45a & Model 47a high output ultra precision & fatigue rated load cells include all the features and the industry common dimensions of the Model 45 & Model 47 plus a high level voltage or current output. The high level output reduces the effects of signal noise, and in most cases, eliminates the need for an additional signal conditioning card in ones data acquisition system. Options include certifications for use in hazardous areas, an internal buffered shunt calibration circuit for ease of setup with an associated indicator, and the removal of zero & span adjustments. The standard calibration is in tension, and optional data is available for both tension and compression.

PERFORMANCE

ENVIRONMENTAL

ELECTRICAL

MECHANICAL

Model 45a
Order Code AL145

Model 47a
Order Code AL147

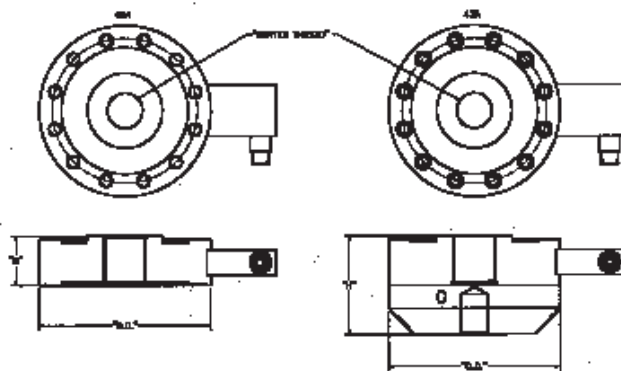
Ranges	0-200 to 0 to 100,000 lbs.	0-200 to 0-100,000 lbs.
Accuracy (Static Error Band)	±0.04% F.S. to ±0.06% F.S.	±0.02% F.S. to ±0.05% F.S.
Output Options	See Below (calibrated in tension)	See Below (calibrated in tension)

Operating Temperature Range	0°F to 185°F
Temperature Effects on Zero & Span ±0.01%F.S./°F	

Electrical Termination	PT1H-10-6P welded stainless steel hermetic connector Mating Connector Order Code AA111
------------------------------	---

Operation	Tension/Compression
Life Cycles (approximately)	One Billion, Fully Reversed
Case Material	Welded Stainless Steel

Dimensions



Model 45a Fatigue Rated (Order Code AL145)

Range	O.D."	H"	Center Thread	Clearance Holes for Mounting
200; 500; 1000; 250; 5000; lbs.	4.12	1.37	5/8-18 UNF-3B	9/32 Dia., 8 Holes Eq. Sp., 3.50 B.C.
10,000-25,000 lbs.	6.06	1.75	1-1/4-12 UNF-3B	13/32 Dia., 12 Holes Eq. Sp., 5.125 B.C.
50,000 lbs.	8.00	2.50	1-3/4-12 UNF-3B	17/32 Dia., 16 Holes Eq. Sp., 6.50 B.C.
100,000 lbs.	11.00	3.50	2-3/4-8 UNF-3B	11/16 Dia., 16 Holes Eq. Sp., 9.00 B.C.

Model 47a Ultra Precision Fatigue Rated

(Order Code AL147) Includes Factory Installed Base Plate

Range	O.D."	H"	Center Thread
200; 500; 1000; 2500; 5000 lbs.	4.12	2.5	5/8-18 UNF-3B
10,000-25,000 lbs.	6.06	3.5	1-1/4-12 UNF-3B
50,000 lbs.	8.00	4.5	1-3/4-12 UNF-3B
100,000 lbs.	11.00	6.5	2-3/4-8 UNF-3B

Specify Output:

Output/Options

See pages AP-6 & 7 for details

Voltage/Option

0 ± 5 Vdc/2c

0 ± 10Vdc/2t

Current/Option

4-20mA/2k (2 wire)

4-20mA/2j (3 wire)

Enhancement Options

Remote Shunt calibration/3d

NOTE: Standard calibration for tension/compression load cells is in tension only.

LOAD

ULTRA PRECISION & FATIGUE RATED