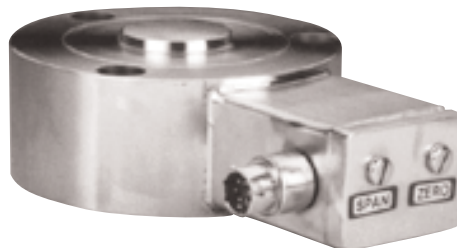


# High Output Pancake Style Compression Load Cells

Models 43a, 73a

WELDED STAINLESS STEEL

ZERO & SPAN ADJUSTMENTS



Model 43a & Model 73a high output compression type load cells include all the features of the Models 43 & 73 plus the option of either voltage or current output. These load cells are of all welded stainless steel construction with hermetic welded-on electrical connectors. The high level -5, 10 Vdc or 4-20mA outputs are standard with zero and span adjustments with gasketed cap screw covers. Options include certifications for use in hazardous area, an internal buffered shunt calibration circuit for ease of set-up with an associated indicator, and the removal of zero & span adjustments for tamper free installations, and a variety of electrical terminations.

## PERFORMANCE

	Model 43a Order Code AL143	Model 73a Order Code BL173
Ranges* .....	0-50 to 0-200,000 lbs.	0-50 to 0-100,000 lbs.
Accuracy		
Non-linearity .....	-0.1% F.S.	-0.1% F.S.
Hysteresis .....	-0.08% F.S.	-0.1% F.S.
Non-repeatability .....	-0.03% F.S.	-0.03% F.S.
Outputs .....	See Below	

## ENVIRONMENTAL

Operating Temperature Range ....	0 F to 185 F
Temperature Effects on Zero & Span	-0.01%F.S./ F

## ELECTRICAL

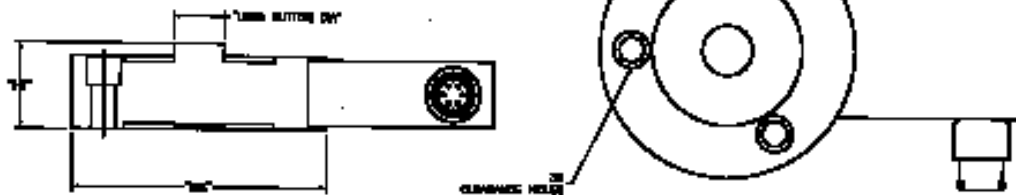
Electrical Termination .....	PTIH-10-6P or equiv. (Hermetic stainless) Mating Connector Order Code AA111
------------------------------	--

## MECHANICAL

Operation .....	10°, Unidirectional	10°, Unidirectional
Case Material .....	Welded Stainless Steel	Welded Stainless Steel

\*Special Ranges available from 5 to 500,000 lbs. Contact Sensotec sales for details.

## Dimensions



Model 43a  
Precision

Model 73a  
Fatigue Rated

Available Ranges	Available Ranges	Dia.	Ht.	Load Button Dia.	Three Clearance Holes for Mounting* Socket Head Cap Screws
50; 100; 250; 500; 1000 lbs.	50; 100; 250; 500 lbs.	3.00	1.18	0.56"	1/4 *3.0 dia. cell has 6 mounting holes
2000; 3000; 4000; 5000 lbs.	1000; 2000 lbs.	3.50	1.18	0.69"	5/16"
7500; 10,000; 15,000;	3000; 4000; 5000;	4.50	2.00	1.50"	3/8"
20,000; 30,000; 50,000;	7500; 10,000; 15,000;	4.50	2.00	1.50"	3/8"
75,000; 100,000 lbs.	20,000; 30,000; 50,000 lbs.	4.50	2.00	1.5"	3/8"
150,000; 200,000 lbs.	75,000; 100,000 lbs.	5.50	2.50	2.00"	3/8"

Specify Output:  
Output/Options

See pages AP-6 & 7 for details	Voltage/Option 0 - 5 Vdc/2c 0 - 10Vdc/2t	Current/Option 4-20mA/2k (2 wire) 4-20mA/2j (3 wire)
--------------------------------	--	--

Enhancement Options  
Remote Shunt calibration/3d