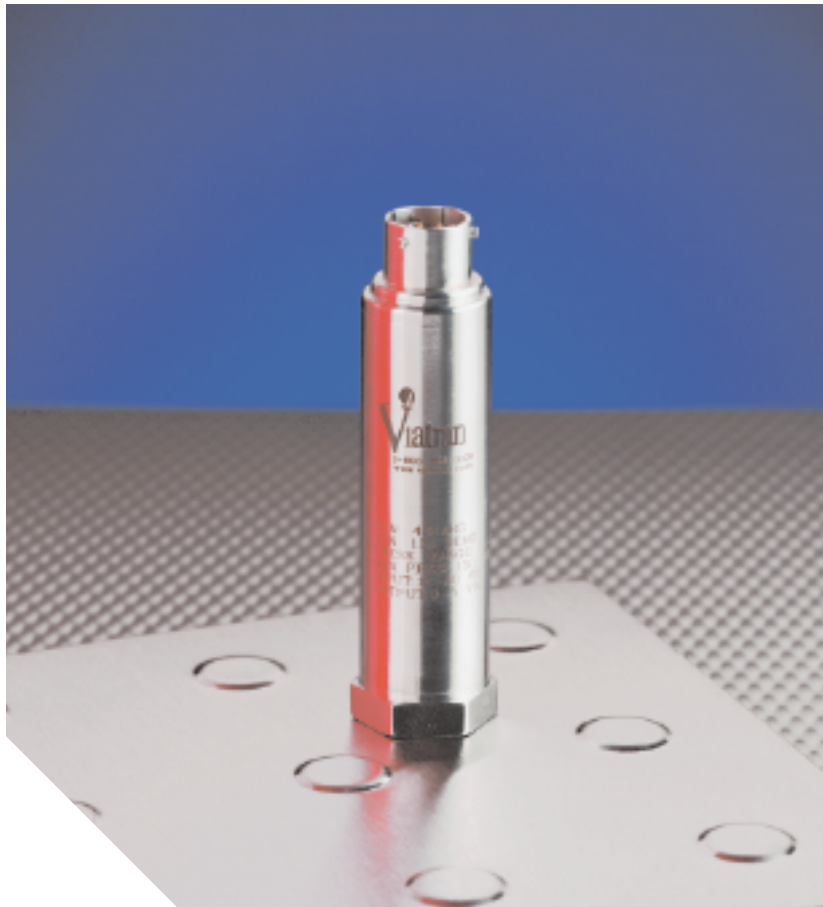


# Pressure Transmitter

## MODEL 422



Viatran Model 422 is designed for applications where limited space and high accuracy are required. With a maximum diameter of 7/8", the 422 is designed to fit in the smallest of places with easy installation.

### FEATURES

- Small size - 7/8" diameter
- $\pm 0.08\%$  combined accuracy
- (0.04% optional)
- 0-5 VDC output, 0-10 VDC optional
- Stainless steel construction
- 316L wetted parts

### TYPICAL APPLICATIONS

- Automotive test
- Brake test
- Engine test
- Transmission test
- Leak detection

## HIGH PERFORMANCE, ACCURATE, COMPACT TRANSDUCER

### DESIGNED FOR TIGHT PLACES

It's tiny but durable. Its 316L stainless steel diaphragm and all welded stainless construction provides a corrosion resistant and shock tolerant instrument ideally suited for corrosive and severe industrial environments.

### INSPIRED BY SMALL PLACES

The 422 is small in size, but packs a high performance punch. The electronics and silicon sensor design have a combined accuracy of better than  $\pm 0.08\%$  with an optional improved accuracy of less than  $\pm 0.04\%$  linearity, hysteresis and repeatability. Available standard outputs are 0-5 VDC or 0-10 VDC.

Viatran's ability to customize products provides extreme flexibility, allowing the 422 to easily fit into your existing system. Options

include alternate pressure ports, electrical connectors, direct-coupled cable and various electrical outputs.

### EASILY ADAPTABLE

The 422 series is just one of the latest addition to Viatran's arsenal of pressure sensors. It is designed to fit a wide range of applications where accuracy, stability, and reliability are important. The standard 6-pin bayonet electrical connector is one of many standard features.

If your application requires high-performance and reliable pressure transmitters, call 1-716-773-1700 or 1-800-688-0030, ext 512 for product availability or to order.



For product availability or to order, please call 1-716-773-1700 or 1-800-688-0030, ext 512.

Grand Island, NY • 1-716-773-1700 • 1-800-688-0030 • [www.viatran.com](http://www.viatran.com) • [solutions@viatran.com](mailto:solutions@viatran.com)

An ISO 9001:2000 Certified Company

## SPECIFICATIONS

### PERFORMANCE

Full Scale Pressure Range	(FSPR) 0-3, 5, 10, 15, 30, 50, 100, 200, 300, 500, 1K, 2K, 3K, 5K, PSIG PSIA, 0-15 PSIV
Non-Linearity (Best Fit Straight Line)	
Hysteresis & Repeatability	±0.08% FSO, optional ±0.04%
Full Scale Output (FSO)	0 to 5 VDC,
Resolution	Infinite
Long Term Stability	0.1%FS/year
Compensated Temperature Range	32°F to 175°F (0°C to 79°C)
Maximum Operating Temperature	185°F (85°C)
Minimum Operating Temperature	-4°F (-20°C)
Non-Operating Temperature Range	-40°F to +250°F (-40°C to 121°C)
Combined Thermal Effect Zero & Span	≤±2% FSO

### ELECTRICAL

Supply Voltage	9 to 30 VDC
Power Supply Regulation	≤0.01% FSO per Volt
Output Signal	0-5 VDC
Circuit Protection	Short circuit and reverse polarity protected.
Insulation Resistance	>200 MegOhms
Response Time	Less than 2 mS
Electrical Connections	6-pin bayonet, (optional alternate connectors available)

### ELECTRICAL CONNECTIONS

#### 6 pin Bayonet

Pin A	+Power
Pin B	-Power
Pin C	+Signal
Pin D	-Signal
Pin E	AC Ground
Pin F	No Connection

### MECHANICAL

Pressure Connections	1/8" NPT Female
Proof Pressure	3 times range ( 500 PSI = 1200 PSI proof) (5000 PSI = 10K PSI)
Burst Pressure	5 times to maximum of 10K PSI (500 PSI = 2400 PSI)
Pressure Cavity Volume	1.5 cubic centimeters
Mounting	May be supported by process piping
<b>Materials of Construction</b>	
Wetted Parts	316L stainless steel
Housing	316 stainless steel
Weight	5 oz. nominal
Identification	Etched onto body

### OPTIONS

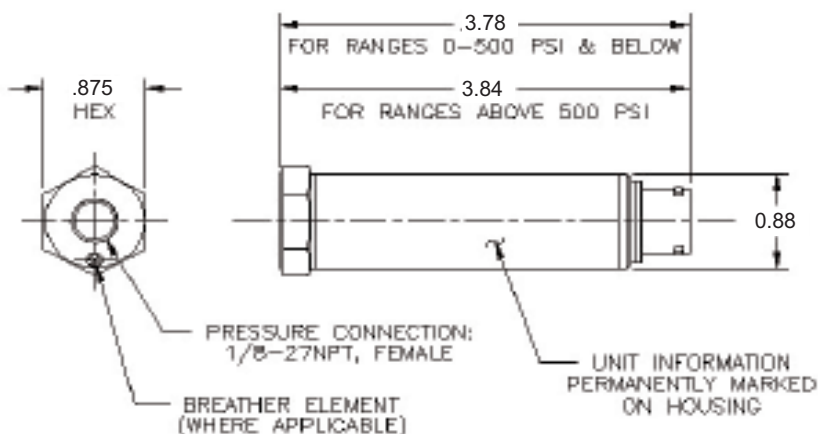
Codes	
DH	Special range
DM	Modified Output 0.5 to 4.5 VDC, 0 to 10 VDC, ± 2.5 VDC,
DN	Improved accuracy (±0.04% FSO NL, H, R each)
DQ	Cleaning for oxygen service
DX	Modified full scale output
EA	Special Calibration run
NH	Optional customer information
TU	Compound special ranges
ZU	Direct coupled cable (Heyco fitting)

### ALTERNATE PRESSURE PORTS

VB	G1/8" (M)
VC	G1/8" (F)
YC	MS33654-04
YH	1/8" NPT(M)

### ACCESSORIES

Mating electrical cable assembly
Mating electrical connector



## THE PRESSURE MEASUREMENT FAMILY.

**CALL 1-800-688-0030, EXT 512 FOR DETAILS ABOUT THE ENTIRE FAMILY**

