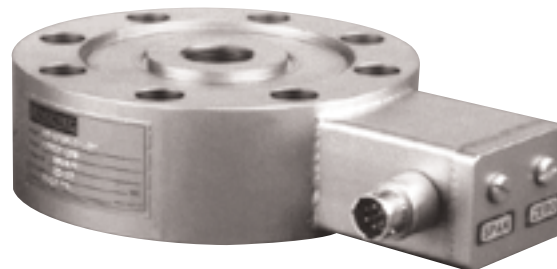


High Output, Pancake Style Tension/Compression Load Cells

Models 41a, 75a

ZERO & SPAN ADJUSTMENTS

WELDED STAINLESS STEEL



Model 41a & Model 75a high output pancake style load cells have the same features as the Models 41 & 75 Tension & compression Cells with hermetically sealed, all welded stainless steel construction and high resistance to side loads. The added feature of an internal amplifier for voltage or current output reduces the effects of signal noise, and eliminates the need in most cases for a signal conditioning card in ones data acquisition system. Options include certifications for use in hazardous areas, an internal buffered shunt calibration circuit for ease of set-up with an associated indicator, and the removal of zero & span adjustments.

PERFORMANCE

	Model 41a Order Code AL141	Model 75a Order Code BL175
Ranges	0-50 to 50,000 lbs.*	0-50 to 20,000 lbs.
Accuracy		
Non-linearity	-0.1% F.S.	-0.1% F.S.
Hysteresis	-0.08% F.S.	-0.1% F.S.
Non-repeatability	-0.03% F.S.	-0.03% F.S.
Outputs	See below	

ENVIRONMENTAL

Operating Temperature Range	0 F to 185 F	0 F to 185 F
Compensated Temperature Range	60 F to 160 F	60 F to 160 F
Temperature Effects on Zero and Span	-0.005% F.S./ F	-0.005% F.S./ F

ELECTRICAL

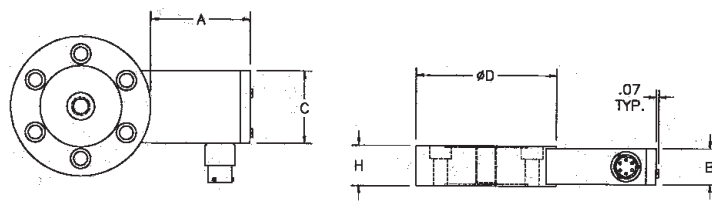
Electrical Termination	PTIH-10-6P Welded Stainless Hermetic Connector Mating Connector Order Code AA111	
------------------------------	--	--

MECHANICAL

Life Cycles (approx)	10 ⁷ fully reversed	10 ⁷ fully reversed
Operation	Tension/Compression	Tension/Compression
Casing Material	Welded Stainless Steel	Welded Stainless Steel

Notes * Special ranges available from 5 to 500,000 lbs.
Standard calibration for tension/compression load cells is in tension only.

Dimensions



Model 41a
(Order Code AL141)
Precision

Model 75a
(Order Code BL175)
Fatigue Rated

Available Ranges	Available Ranges	Dia.	Ht.	Mtg. Hole ID	Center Thread	A"	B"	C"
50; 100; 250; 500; 1000 lbs.	50; 100; 250; 500 lbs.	3.00	1.00	0.28"	3/8-24UNF	2.5	0.9	1.8
2000; 3000; 4000; 5000 lbs.	1000; 2000 lbs.	3.50	1.00	0.34"	1/2-20UNF	2.5	0.9	1.8
7500; 10,000; 15,000 lbs.	3000; 4000; 5000; 7500 lbs.	5.50	1.80	0.40"	1-14UNS	2.3	1.5	2.0
20,000; 30,000; 50,000 lbs.	10,000; 15,000; 20,000 lbs.	6.00	1.80	0.53"	1-1/2-12UNF	2.3	1.5	2.0

Specify Output:

Output/Options	Voltage/Option	Current/Option
See pages AP-6 & 7 for details	0 - 5 Vdc/2c	4-20mA/2k (2 wire)
	0 - 10Vdc/2t	4-20mA/2j (3 wire)

Enhancement Options
Remote Shunt calibration/3d

1-800-848-6564

Honeywell

Sensotec Sensors

www.honeywell.com/sensing