

Sanitary Transmitter

MODEL 364



You need a product you can trust. Viatran has been consistently delivering pressure and level solutions for over 40 years. When you come on board with a Viatran unit, you can rest assured that you're getting a superior product for the same price. Stop paying the price for an inferior product. Take a look at the Viatran Model 364.

FEATURES

- All welded SS construction
- Standard Hastelloy-C diaphragm
- Ranges to 30" WC full scale
- 1.5% per 100° F temperature compensation
- Zero & span adjust
- 1½- 2" Tri-clamp
- Standard Field Calibration
- <1 minute CIP/SIP recovery time

TYPICAL APPLICATIONS

- Sanitary tank level
- Beverage Processing
- Food Processing
- Dairy Processing
- Pharmaceutical Processing

A MEMBER OF THE VIATRAN CLEAN FREAKS

At Viatran, we think you shouldn't have to pay extra for Hastelloy, it should come standard. Anything standard in your process should be standard in your price. Meeting 3A standards for sanitary instrumentation should also be standard. With any member of Viatran's Family of solutions (pictured on reverse) you can be assured that sanitary standards are met.

FORGET DRIFT

The 364 brings increased accuracy to the industry -- standard. As for Drift? Viatran is confident enough to promise that your unit will not suffer daily drift problems. It offers higher proof pressure, increased temperature compensation and faster temperature recovery.

The Model 364 is a gage or absolute pressure transmitter with a Tri-clamp connection. The standard flush hastelloy diaphragm eliminates the growth of bacteria and better facilitates Clean in Place (CIP) systems. Quick-disconnect Tri-clamp connections make it ideal for applications where frequent cleaning is required.

VIATRAN'S WORLD CLASS SERVICE ALSO COMES STANDARD WITH ALL SANITARY PRODUCTS.

Visit www.viatran.com/cleanfreaks.htm for details on the Model 364 and other member of the Viatran Sanitary family. Viatran has over 40 years of experience measuring pressure and level. We can solve your application.



For product availability, or to order please call 1-800-688-0030, ext 506.
Grand Island, NY • 1-800-688-0030 • www.viatran.com • solutions@viatran.com

An ISO 9001:2000 Certified Company

SPECIFICATIONS

PERFORMANCE

Full Scale Pressure Range (FSPR)	0-3 thru 0-500 PSIG, 0-15 PSIV 0-15 thru 0-500 PSIA
Non-linearity (Best Fit Straight Line)	≤0.25% BSFL
Hysteresis	≤0.05%
Repeatability	≤±0.05%
Full Scale Output (FSO)	16 mA at 70°F
Long Term Stability	≤±0.25% FSO per 6 months
Pressure Connection Effect	
on Zero Balance	≤±0.5% FSO (no effect with zero adjust)
Span	≤±0.5% FSO (no effect with zero adjust)
Response Time	≤5 mSec
Temperature Effect on Zero	≤±1.5% FSO per 100°F
Temperature Effect on Span	≤±1.5% FSO per 100°F
Operating Temperature Range	5°F to +185°F
Process Temperature Range	5°F to +200°F
Non-Operating Temperature Range	0°F to +200°F
Orientation effect (from horizontal)	≤1.0% FSO for 3 & 5 PSI ≤0.5% for 10 PSI and higher
Oil Fill	Neobee M20. Other oil fill available for varying temperatures.

ELECTRICAL

Supply/Voltage	9 to 30 VDC (15 to 30 VDC with display)
Power Supply Regulation Effect	<±0.04% FSO per Volt
Output Signal	4 to 20 mA
Span Adjustments	5:1 ranging
Load Impedance	1050 Ohms max at 30 VDC
Ripple	<±0.08% FSO
Zero Balance	4 mA ±0.5 FSO at 70°F
Span Balance	20 mA ±0.5 FSO
Calibration Signal (Optional)	20% ±1.0% of FSPR
Circuit Protection	Varistor protected across the input leads for surges above 79V and currents to 40 Amps peak with a pulse width of 8-20 µsec. Reverse polarity protected.

Bridge Resistance	5000 Ohms nominal
Insulation Resistance	≤5 NS Conductance
Electrical Connection	½" NPT(F) Internal terminal block
Terminal 4	+Power/Signal
Terminal 3	-Power/Signal
Terminal 2	n/c
Terminal 1	Case Ground

MECHANICAL

Pressure Connections	1½", 2"
Proof Pressure	3X rated range or maximum range of clamp and tubing, whichever is less.
Weight	40 oz.

CONSTRUCTION

MATERIALS

Enclosure Housing	304, & 316 Stainless Steel
Pressure Connection	Standard Hastelloy-C wetted parts
Unit Mounting	Supported by the pressure connection
Identification	Laser etched onto body type

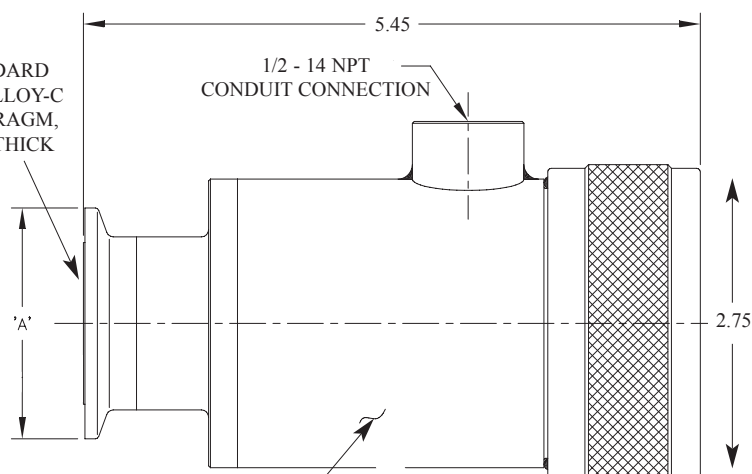
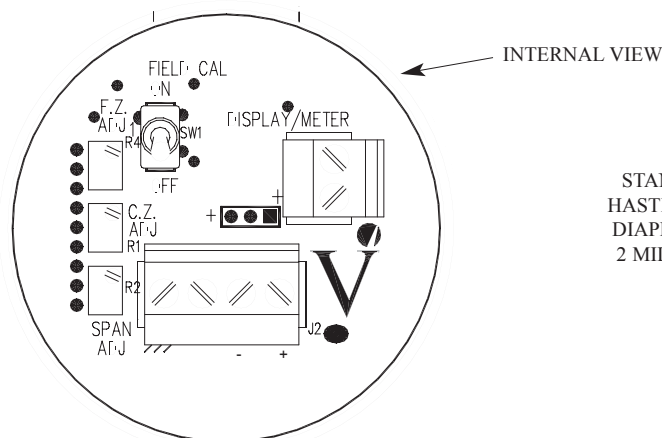
OPTIONS

Codes	Descriptions
BB	3 pin mini change
EA	Special Calibration Run
HA	1½" Tri-Clamp
HB	2" Tri-Clamp
NH	Customer specified identification
NSR	Non Standard Range
PW	1/8 DIN digital indicator (consult factory)
TQ30	3½" LED display - top viewable
TQ71	3½" LED display - side viewable
TS	Improved service finish to 15RA (316SS only)
ZU	Direct coupled cable

Consult factory for other tri-clamp sizes and delivery

ACCESSORIES

Mounting Bracket
ViBox (Tank profiling)
Loop Powered Digital Indicator



UNIT INFORMATION
PERMANENTLY
MARKED ON HOUSING

TRI-CLAMP FITTING SIZE	'A'	VIATRAN SIZE CODE
1 1/2"	ø2.000	HA
2"	ø2.500	HB

THE VIATRAN SANITARY FAMILY.

