

SINGLE-ENDED BEAM

RL32011WB-L

NTEP Certified 1:5000 Class III, Multiple Cell, Stainless Steel, IP67

**DISCONTINUED
LIMITED QTY
AVAILABLE**



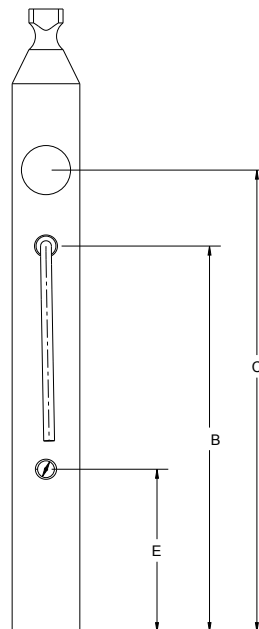
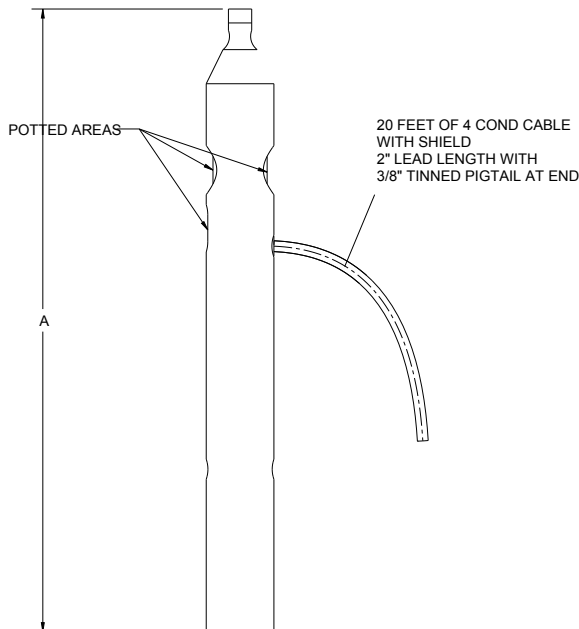
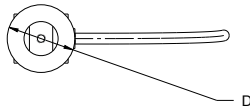
Dimensions

Picture is a representation of actual product

| Rated Capacity | A | B | C | D | E |
|----------------|-------|-------|-------|------|------|
| lb/in | | | | | |
| 1,250 lb | 11.50 | 7.12 | 8.52 | 1.25 | 3.0 |
| 2,500 lb | 11.50 | 8.5 | 8.4 | 1.62 | 3.0 |
| 5,000 lb | 10.9 | 5.5 | 7.4 | 2.0 | 3.0 |
| 10,000 lb | 12.6 | 5.9 | 8.0 | 2.5 | 3.0 |
| kg/mm | | | | | |
| 567.0 kg | 292.1 | 180.9 | 216.5 | 31.8 | 76.2 |
| 1,134.0 kg | 292.1 | 215.3 | 212.9 | 41.1 | 76.2 |
| 2,268.0 kg | 276.9 | 138.8 | 187.5 | 50.8 | 76.2 |
| 4,535.9 kg | 320.5 | 149.6 | 203.2 | 63.5 | 76.2 |

Order Information

| Load Rating | | Part# | Est. Weight | Price |
|-------------|------------|---------------|-------------|---------|
| 1,250 lb | 566.99 kg | 119788 | 5 lb | Consult |
| 2,500 lb | 1,134.0 kg | 119789 | 7 lb | Consult |
| 5,000 lb | 2,268.0 kg | 119790 | 9 lb | Consult |
| 10,000 lb | 4,535.9 kg | 119791 | 17 lb | Consult |



Interchangeable Products

AVERY WEIGH TRONIX®

Weigh Bar —

Specifications

Full Scale Output:

2.0 ± 0.1% mV/V

Output Resistance:

350 (± 3) ohms

Input Resistance:

385 (± 10) ohms

Material/Finish:

Stainless steel

Temperature:

Compensated range
14° F to 104° F/-10° C to 40° C
Operating range
-40° F to 150° F/-40° C to 65° C

Safe Overload:

150% full scale

Safe Sideload:

100% full scale

Rated Excitation:

5-10 VDC

Combined Error:

0.02% full scale

Non-Repeatability:

± 0.01% full scale

Insulation Resistance:

5,000 megohms

Cable Color Code:

Green + Excitation
Black - Excitation
White + Signal
Red - Signal

Seal Type:

Potted, IP67

Cable Length:

20 ft (6.1 m)

Cable Diameter:

0.190 polyurethane jacket

Warranty:

Two-year limited warranty

Approvals:

