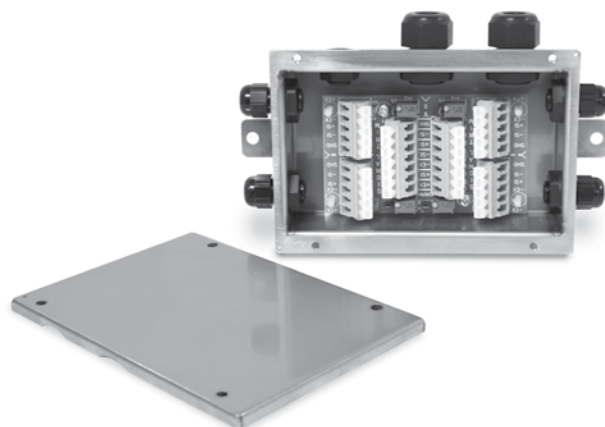


JB4SS

TuffSeal® Signal Trim Junction Box

**Approvals****Specifications:****Cable Fittings:****PN 88956:**

- (4) PG7 0.118-0.255 strain relief
- (2) PG11 0.197-0.394 strain relief
- (1) PreVent™ breather vent

PN 107700:

- (4) PG9 0.138-0.315 strain relief
- (2) PG11 0.197-0.394 strain relief
- (1) PreVent™ breather vent

Enclosure:

Stainless steel NEMA Type 4X

Connectors:

Spring clamp screwless, 12-28 AWG

Trimming:

Individual cell, signal trim

Potentiometers:

100,000 ohm, 25 turn cermet

Circuit Board:

3.8 in x 2.3 in (96.5 mm x 58.4 mm), with conformal coating

Warranty:

One-year limited warranty

Standard Features:

- Stainless steel, NEMA Type 4X enclosure
- Jumpers to enable/disable a load cell
- PreVent™ breather vent
- Conformal coated circuit board
- Number of cells: 2, 3 or 4 single cells
- Expansion port

Part Number/Price

Part#	Description	Price
88956	JB4SS signal trim junction box with PG7 cord grips for load cells	Consult
107700	JB4SS signal trim junction box with PG9 cord grips for load cells	Consult
88958	Board only	Consult
182990	Board only with standoffs	Consult
165271	Enclosure only (Includes cord grip and filter)	Consult

Note: Do not mix junction box models or use other brands of junction boxes with Rice Lake junction boxes. There is a risk of system instability.

