

Specifications:

Cable Fittings:

- (4) PG7 0.118-0.255 strain relief
- (2) PG11 0.197-0.394 strain relief
- (1) PreVent breather vent

Enclosure:

Stainless steel NEMA Type 4X

Connectors:

Spring clamp screwless, 12-28 AWG

Trimming:

Individual cell, excitation trim

Potentiometers:

100 ohm, 25 turn cermet

Circuit Board:

3.8 in x 2.3 in (96.5 mm x 58.4 mm), with conformal coating

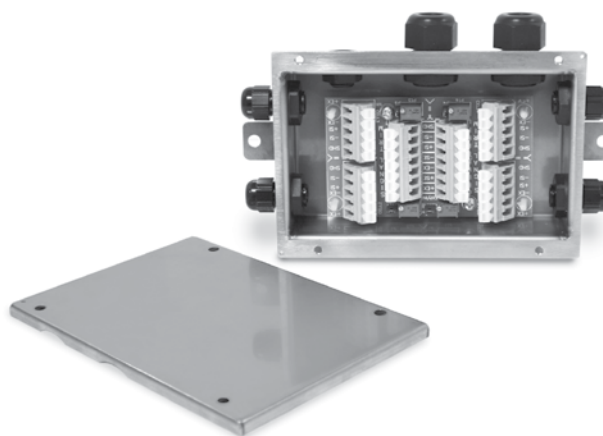
Warranty:

One-year limited warranty

Applications:

- Floor, tank, hopper scales

Approvals



Standard Features:

- Stainless steel, NEMA Type 4X enclosure
- Jumpers to enable trimming
- PreVent™ breather vent
- Conformal coated circuit board
- Number of cells: 2, 3 or 4 single cells
- Expansion port

Part Number/Price

Part #	Description	Price
91779	JB4ES excitation trim junction box	Consult
89446	Board only	Consult
165271	Enclosure only (Includes cord grip and filter)	Consult

Note: Do not mix junction box models or use other brands of junction boxes with Rice Lake junction boxes. There is a risk of system instability.

