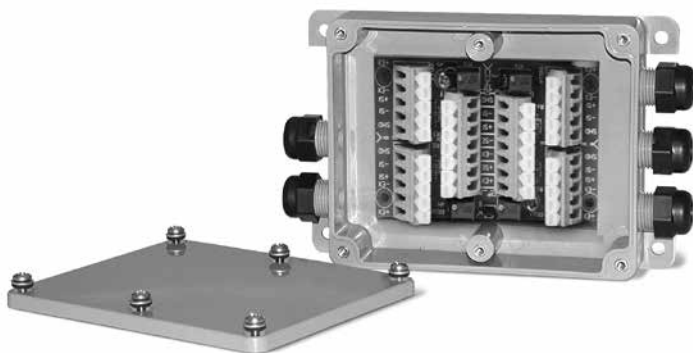


EL204

Signal Trim Junction Box

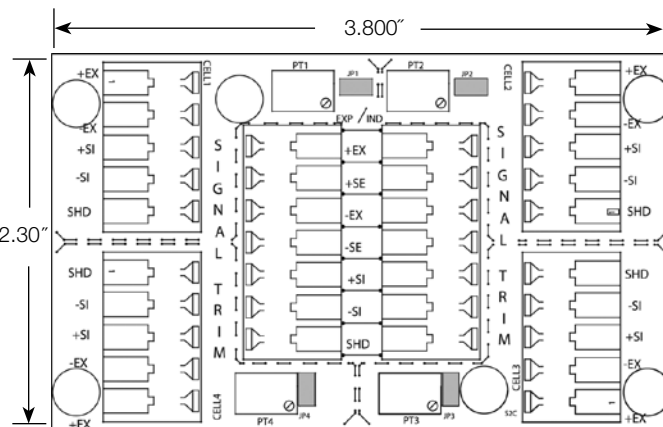
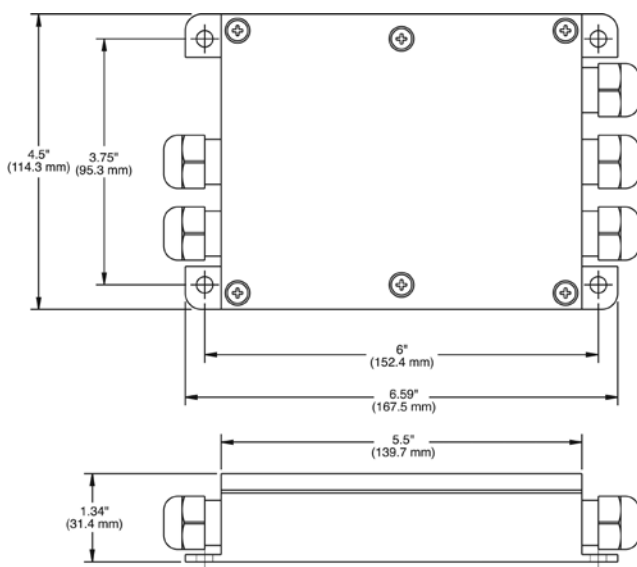
**Standard Features:**

- ABS enclosure with molded-in cable fittings
- Premium screw terminals
- 6-screw attachment to lid, die cut gasket for superior environment protection
- Number of cells: 2, 3 or 4 single cells

Part Number/Price

Part#	Description	Price
73428	EL204 junction box	Consult
88958	Board only	Consult

Note: Do not mix junction box models or use other brands of junction boxes with Rice Lake junction boxes. There is a risk of system instability.

**Specifications:****Cable Fittings:**

Five water tight nylon compression fittings, 0.210 in x 0.280 in (5.3 mm x 7.1 mm)

Connectors:

Spring clamp screwless, 12-28 AWG

Trimming:

Individual cell trim, signal trim

Potentiometers:

100K ohm, 25 turn cermet

Enclosure:

ABS with molded through-fittings, sealed 6-screw lid

Circuit Board:

3.8 in x 2.3 in (96.5 mm x 58.4 mm);
with conformal coating

Warranty:

One-year limited warranty

Applications:

- Floor, hopper, tank or livestock applications