

**Interchangeable Products**

RICE LAKE WEIGHING SYSTEMS

**RL35023S** ..... page 131

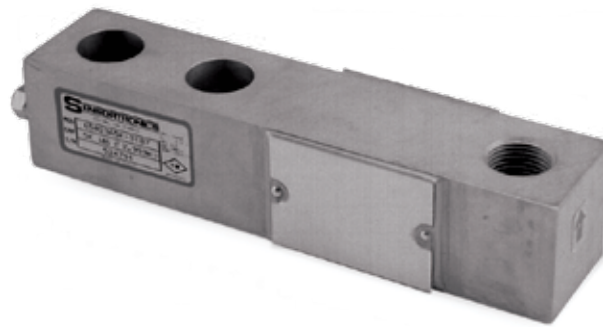
VPG SENSORTRONICS®

**65023SS** ..... page 316**Weigh Module Available**

RICE LAKE WEIGHING SYSTEMS

**RL50210** ..... page 139

RICE LAKE WEIGHING SYSTEMS

**RL1800 Series** ..... page 62**Specifications****Full Scale Output:**

3.0 mV/V

**Output Resistance:**

349-355 ohms

**Input Resistance:**

343-357 ohms

**Material/Finish:**

Stainless steel

**Temperature:**

Compensated range

14° F to 104° F (-10° C to 40° C)

Operating range

-40° F to 150° F (-40° C to 65° C)

**Manufacturer Model Number:**

65023SXX-5113

**Safe Overload:**

150% full scale

**Rated Excitation:**

5-10 VDC (15 V maximum)

**Nonlinearity:**

0.03% full scale

**Hysteresis:**

0.02% full scale

**Insulation Resistance:**

5,000 megohms

**Deflection at Capacity:**

500 lb-1,500 lb=0.013 in (0.33 mm),

1,000 lb-5,000 lb=0.017 in-0.025 in (0.42 mm-

0.64 mm),

5,000 lb-10,000 lb=0.025 in-0.035 in (0.64 mm-

0.89 mm),

15,000 lb-20,000 lb=0.048 in-0.013 in (1.22 mm-

0.33 mm)

**Seal Type:**

Environmentally sealed, IP67

**Cable Length:**

20 ft (6.1 m)

**Cable Color Code:**

Red .....+ Excitation

Black.....- Excitation

Green .....+ Signal

White .....- Signal

**Warranty:**

One-year limited warranty

**Approvals:****Dimensions***Picture is a representation of actual product*

Rated Capacity	A1	A2	A3	B	C	D	E	F	G
<b>lb/in</b>									
1,000-4,000	1/2-20 UNF-2B	0.62	0.53	1.00	1.25	5.12	1.00	3.00	0.50
5,000-10,000	3/4-16 UNF-2B	0.75	0.78	1.50	1.50	6.75	1.50	3.75	0.75
<b>kg/mm</b>									
453.6-1,814.4	1/2-20 UNF-2B	15.8	13.5	31.8	31.8	130.1	25.4	76.2	12.7
2,268.0-4,535.9	3/4-16 UNF-2B	19.1	19.8	38.1	38.1	171.5	38.1	95.3	19.1

**Order Information**

Load Rating		Part#	Est. Weight	Price
Threaded Hole				
1,000 lb	453.6 kg	28925	3 lb	Consult
2,000 lb	907.2 kg	28926	3 lb	Consult
2,500 lb	1,134.0 kg	28927	3 lb	Consult
2,500 lb*	1,134.0 kg	170030	3 lb	Consult
4,000 lb	1,814.4 kg	28929	3 lb	Consult
5,000 lb	2,268.0 kg	28930	5 lb	Consult
10,000 lb	4,535.9 kg	28931	5 lb	Consult

\*65023S 2,500 lb- 5513, low-profile 0.75 inches tall

