



Dimensions

Picture is a representation of actual product

Rated Capacity	A	B	C	D	E	F	O	R1	R2
kg/mm									
20,000	138.25	112.25	72.25	50.00	32.25	69.00	88.00	15.00	150.00
30,000	138.25	112.25	72.25	50.00	32.25	69.00	88.00	15.00	150.00
50,000	155.5	115.75	74.00	50.00	32.25	69.00	88.00	35.00	300.00

Order Information

Load Rating	Part#	Est. Weight	Price
20,000 kg	169233	10 lb	Consult
30,000 kg	169234	10 lb	Consult
50,000 kg	169235	13 lb	Consult

Specifications

Full Scale Output:

1.5 mV/V

Output Resistance:

605 (± 5) ohms

Input Resistance:

670 (± 15) ohms

Material/Finish:

Stainless steel

Temperature:

-10°C to 40°C

Safe Overload:

150% full scale

Rated Excitation:

5-10 VDC

Total Error:

0.02% of applied load

Seal Type:

Environmentally sealed, IP68

Insulation Resistance:

2,000 megohms

Cable Length:

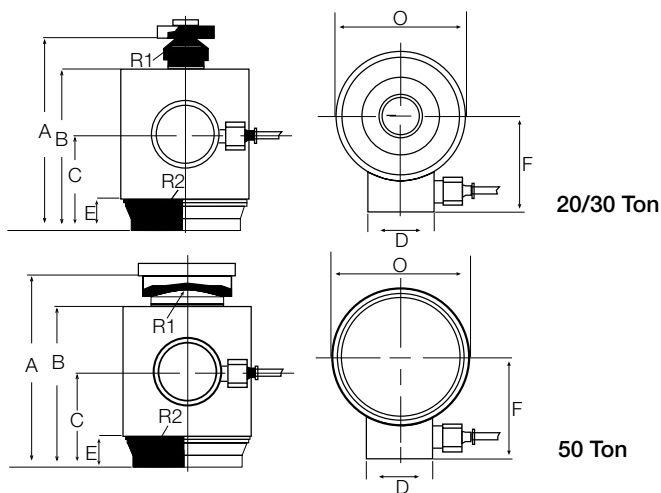
15 m (49.2 ft)

Cable Color Code:

Green+ Excitation
 Black- Excitation
 Red+ Signal
 White- Signal
 Blue+ Sense
 Brown- Sense

Warranty:

One-year limited warranty



Load cups not included